



ON THE MARKET

WE'RE LOOKING FOR... A STATEMENT STAIRCASE

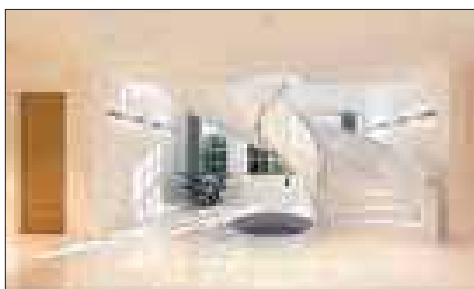


ANDALUCIA
Five-bedroom villa, **£2.8million**

LOOKS Not for shrinking violets this geometric, pink and citrus-coloured Sotogrande villa. But if you thrive on drama, you'll have a skip in your step as you climb Casa Mexicana's Mayan-inspired stairs to the master suite, surveying your sun-drenched courtyard.

CHARACTER The only private property in Spain designed by Mexico's celebrated architect, Legorreta, the villa won a four-star honour at the International Property Awards. Slits in the walls and courtyard roof cast patterns in the living space while pool, tiled in Mexican mosaic, overlooks the sea.

VITAL STATISTICS The living space, including guest wing, occupies 7,500sq ft in a plot of 1.2 acres. Minutes' drive from a marina with chic shops and restaurants. (Contemporary Villas, 00 34 952 799 200, www.contemporaryvillas.com)



BERKSHIRE
Five-bedroom house, **£12million**

LOOKS Making an entrance would become a way of life at Hollow Lane House, thanks to the striking and enormous central hall. The staircase itself graces the minimalist setting like a sculpture.

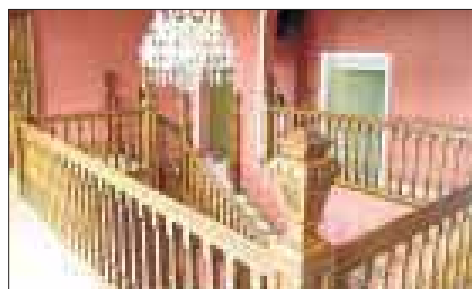
CHARACTER French doors lead from the kitchen/breakfast room to a terrace that runs the length of the house. All bedrooms are ensuite. The lower ground floor has a swimming pool, spa, gym, wine cellar, cinema and games room.

VITAL STATISTICS 13,000sq ft of living space in three acres of land. Heathrow is 11 miles away while the famous Wentworth golf course is just on the doorstep. (Savills, 01344 295 375, www.savills.co.uk)

PROPERTY ONLINE

Looking for your dream home? Check out the latest houses for sale

telegraph.co.uk/property



BEDFORDSHIRE
13-bedroom mansion, **£2million**

LOOKS This original carved oak staircase and galleried landing whispers of The Grange's history. Built in 1906 for a wealthy tea merchant, the secluded country mansion was turned into a residential home in the 1990s.

CHARACTER Its setting in beautiful Bedfordshire countryside, its decor and sheer space - seven reception rooms, 13 bedrooms, nine ensuite - evokes the grandeur of another era.

VITAL STATISTICS Vast gardens encircle the house, five miles north-west of Bedford, home to the five Harpur Trust private schools and trains to London (40 minutes). (Taylors, 01234 325081, www.taylorsestateagents.co.uk)

Edition: 01
Date: 05-10-2008
Type: General Consumer
Frequency: 52 Per Year
Circulation: 667692
Page: 2

ArticleId: 17657526



WORK

Convenience for the busy commuter



ENFORD, WILTSHIRE
Four-bedroom cottage, **£775,000**

Make the dash from Paddington to Pewsey in 65 minutes and place yourself in an Area of Outstanding Natural Beauty between the Marlborough Downs and Salisbury Plain. Manor Cottage, seven miles from the station, was built in 1799 of brick and stone chequerboard. It is reached by a long private drive and has a studio, a big garden with fruit trees, and permission to extend. Knight Frank (01488 682726).

SCHOOL

Family friendly within a top school area



MOSELEY, BIRMINGHAM
Four-bedroom semi, **£395,000**

Two of several outstanding grammars in Birmingham are King Edward VI Camp Hill School for boys (web.camphillboys.bham.sch.uk) in Moseley and King Edward VI Camp Hill for girls (www.kechg.org.uk) in neighbouring Kings Heath. Moseley offers a village-like haven and a lively music scene in this industrious city. A four-bedroom semi in Salisbury Road can be bought through Chamberlains (0121 442 4040).

PLAY

Caroline McGhie

Peaceful retreat for free spirits



SHOREHAM-BY-SEA, WEST SUSSEX
Two-bedroom house, **£550,000**

You might as well be living in a boat if you buy The Toll House. It sits right on the edge of the River Adur, which fills and drains with the tide, and it comes with a mooring, slipway and gate to an old smugglers' cave. It has two bedrooms, decking on which to sit and watch the sun set, an under-house store, studio and parking for four cars. Wake to the sound of the gulls each morning. A Wycherley (01273 473329).